

Investor Overview

INTERNATIONAL
zeolite

**Powering Environmental Benefits Through
Natural Zeolite Solutions**

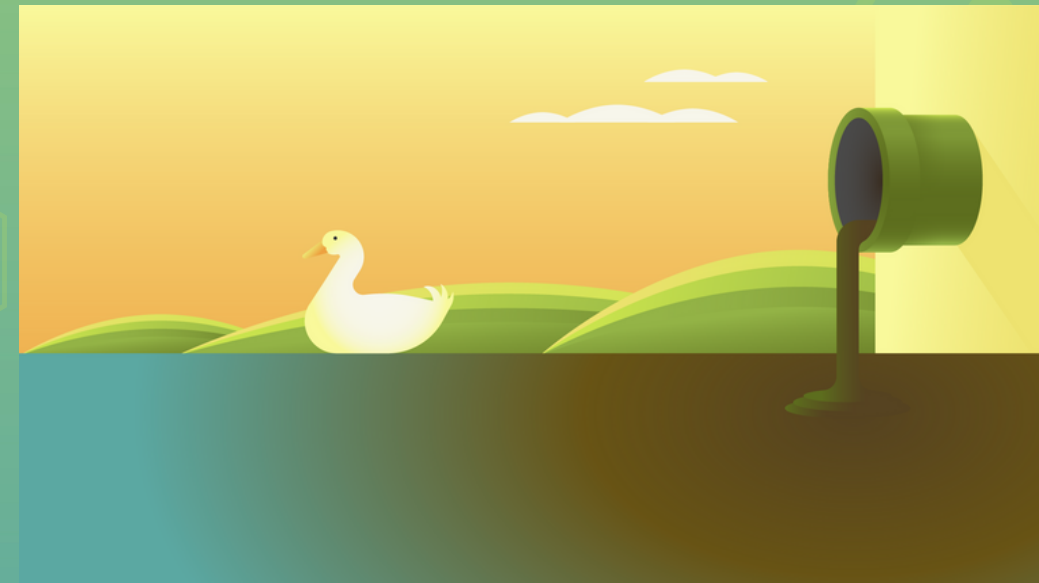
TSX-V: IZ | OTCPK: IZCFF | FRA: ZEON

February 2022

What We Do

The Problem

Greenhouse gas emissions, hazardous environmental leaching and growing world populations are at the very core of significant climate change impacts. It is hard not to argue that human influence has negatively impacted the world's climate system. Ultimately, current non-renewable and often hazardous or toxic products across all commercial and consumer practices are unsustainable.

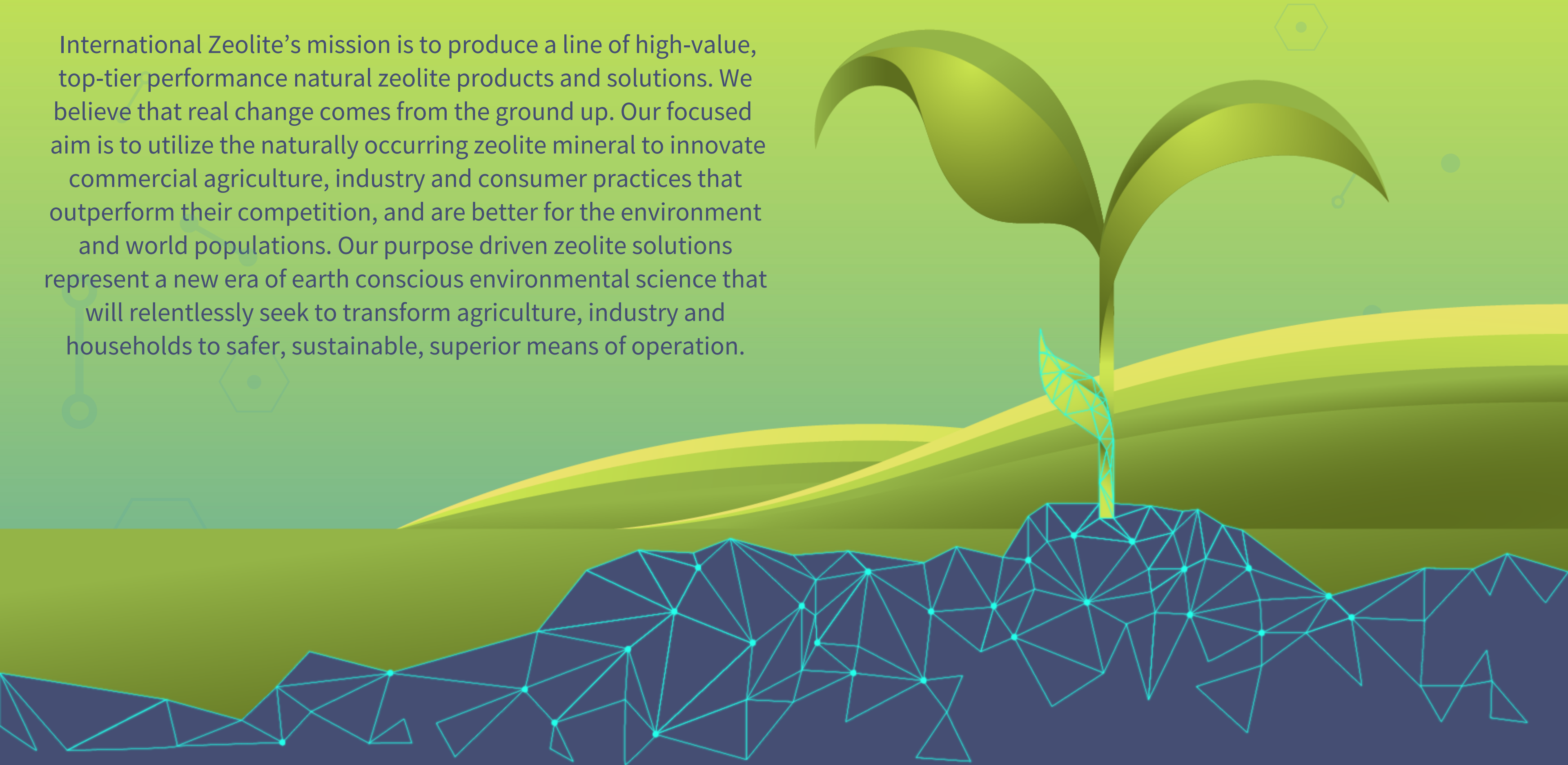


Our Solution

Utilize the naturally occurring zeolite mineral to develop and produce enhanced zeolite-based products within the agricultural, industrial and consumer use segments – products that will provide superior performance and financial benefit, while at the same time being safer to use and more eco-friendly.

Our Mission

International Zeolite's mission is to produce a line of high-value, top-tier performance natural zeolite products and solutions. We believe that real change comes from the ground up. Our focused aim is to utilize the naturally occurring zeolite mineral to innovate commercial agriculture, industry and consumer practices that outperform their competition, and are better for the environment and world populations. Our purpose driven zeolite solutions represent a new era of earth conscious environmental science that will relentlessly seek to transform agriculture, industry and households to safer, sustainable, superior means of operation.

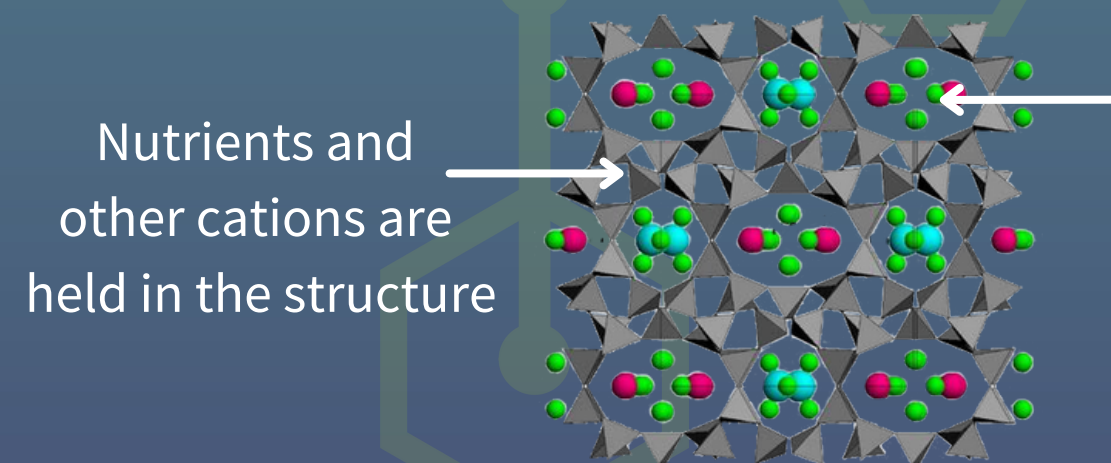


What is Zeolite?

- Naturally occurring microporous, aluminosilicate minerals found in volcanic ash
- Natural and Synthetic types

Unique Characteristics

- High, negative surface charge density and high cation exchange capacity providing a unique ability to absorb and adsorb a broad range of materials
- Porous, honeycomb, sieve structure is perforated by microscopic pores helping to act as natural filters
- Can hold up to 60% of its own weight in water and nutrients



Zeolite honeycomb structure and channel-ways

Applications

- Can be used in raw unprocessed form or processed into specific sizes ranging from granular to powder form depending on application
- Simple, sustainably safe and inexpensive solution to many problems spanning a variety of industries and environmental issues.



Market Size

Zeolite Production 2021 - Natural (Volume)

Region	Tons - Thousands	CAGR % (2022-30)
Global	1,117.4	2.9%
North America	102.1	4.1%

Zeolite Market 2021 - Natural (USD)

Region	USD (Millions)	CAGR % (2022-30)
Global	541.3	5.2%
North America	51.6	5.4%

Zeolite Market 2021 - Natural (USD)

Region	USD (Millions)	CAGR % (2022-30)
Canada	12.8	6.1%
USA	38.8	5.3%

Targeted Market Segments 2021 - (USD)

Segment 2021	USD - Millions	CAGR % (2022-30)
Animal Feed	\$88,180.6	4.5%
Artificial Turf	\$2,746.8	6.2%
Composting	\$920.9	4.3%
Fly Ash	\$1,605.1	5.9%
Soil Amendment	\$1,772.5	5.7%
Road Salt & Sand	\$1,197.8	5.6%
Water Reclamation	\$280,539.6	7.9%

Why Invest in IZ?

Company

Focused Value Creation and Performance Improvement

- ✓ Undervalued market capitalization & share price
- ✓ Timely, relevant Green Tech identity
- ✓ Immediate/short-term value creation opportunities
- ✓ Significant planned performance & market share growth
- ✓ Diversified revenue streams & minimized capital investment
- ✓ High margin product pipeline
- ✓ Exclusivity to transformational technology IP
- ✓ Secure supply with existing operational infrastructure
- ✓ Vertically integrated operations
- ✓ World class team

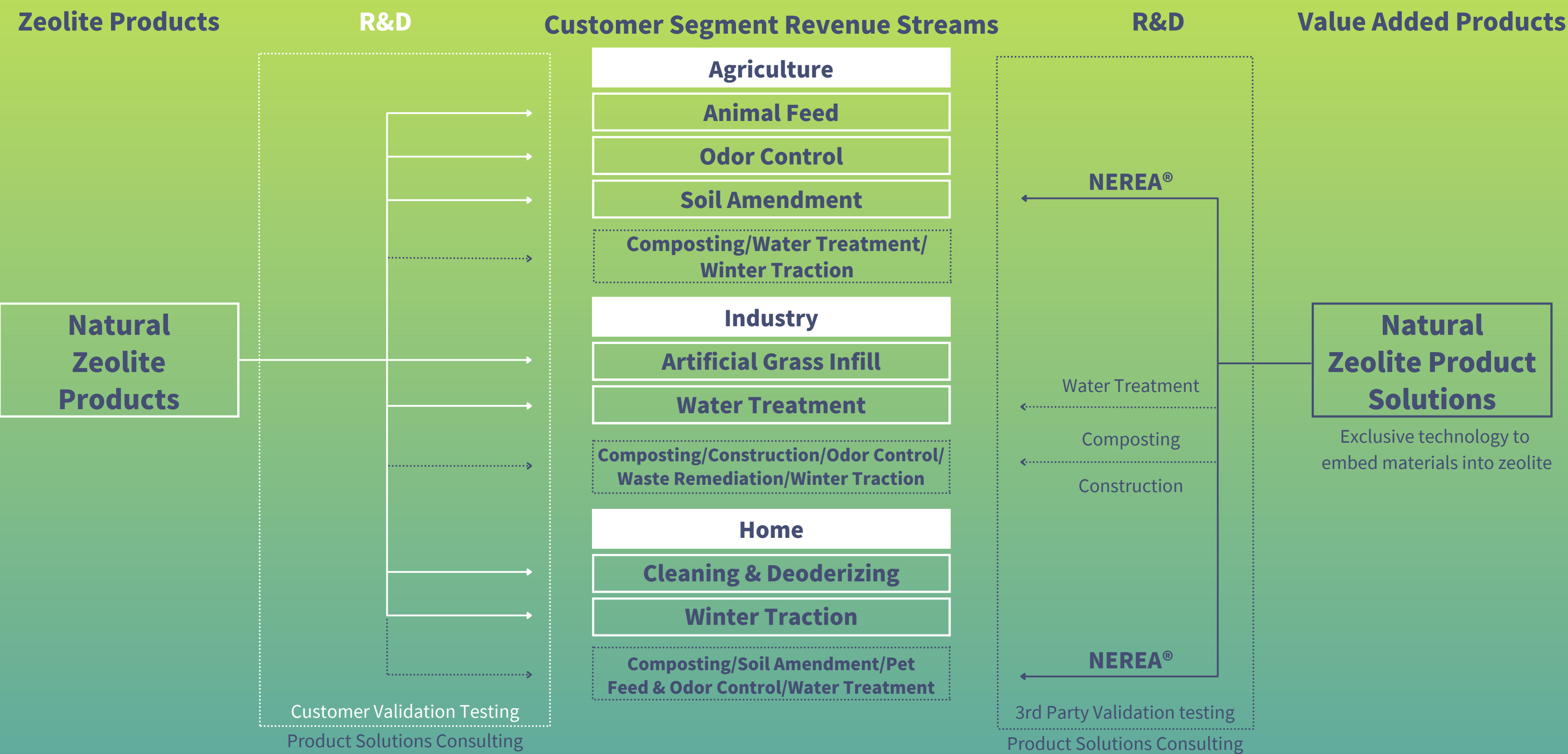
ROI

Market Opportunity

Establish Leadership Position

- ✓ Underdeveloped market at an infancy stage
- ✓ Strong forecasted industry & target market growth
- ✓ Market timing and position
- ✓ Minimal competition focused on supply
- ✓ Awareness leadership void
- ✓ Significant, untapped product use applications
- ✓ Fragmented market with industry consolidation opportunities

Business Model



Operations Model

REVENUE STREAMS



MINING - NATURAL ZEOLITE



PROCESSING & PACKAGING



MARKETING & SALES

Agriculture

- Animal Feed
- Soil Amendment

Industry

- Artificial Turf Infill
- Composting
- Fly Ash
- Water Reclamation
- Road Salt & Sand Replacement

Home

Bromley Creek
Princeton, BC
IZ Owned

Sun Group (Future)
Princeton, BC
IZ Owned

Bear River Zeolite
Preston, Idaho, USA
3RD Party Partner

Absorbent Products Ltd
Kamloops, BC
3RD Party Contract Partner

3rd Party Contract
Partner Kamloops, BC
3rd Party Contract Partner

Sublicensee
3rd Party Contract Partner

Absorbent Products Ltd
Kamloops, BC
3RD Party Contract Partner

Earth Innovations inc
Toronto, ON
IZ Subsidiary Company

IZ
Toronto, ON
Branding

Sublicensee
3rd Party Contract Partner

Earth Innovations inc
IZ Subsidiary Company

NEREA®

Bromley Creek, BC

San Andreas Mine, Cuba

Bear River Zeolite, USA

Research & Development

Internal Expertise/Vineland Research/Niagara College Research/University of Havana

Products

SEGMENTS

BRANDED SALES

DEVELOPMENT

LAUNCH

AGRICULTURE

Natural Zeolite
Various Particle/Mesh Sizes

The Green Patch -
Soil Conditioner (3 skus)

Z-lite Feed (5 skus)

Barn Sense (7 skus)

NEREA

- (1) NEREA®Substrate
- (2) NEREA®Fertilizer
- (3) NEREA®Plus Foliar Fertilizer
- (4) NEREA® Pesticides
- (5)NEREA®ZR Rooter

INDUSTRIAL

Natural Zeolite
Various Particle/Mesh Sizes

ecoTRACTION (5 skus)

Water Treatment

Municipal Composting

Concrete Products

CONSUMER

ecoTRACTION (5 skus)

ecoTRACTION Pro (3 skus)

Smell Grabber (2 skus)

ecoAIR - Rebrand

ecoCOMPO

ecoSOIL

NEREA®Fertilizer

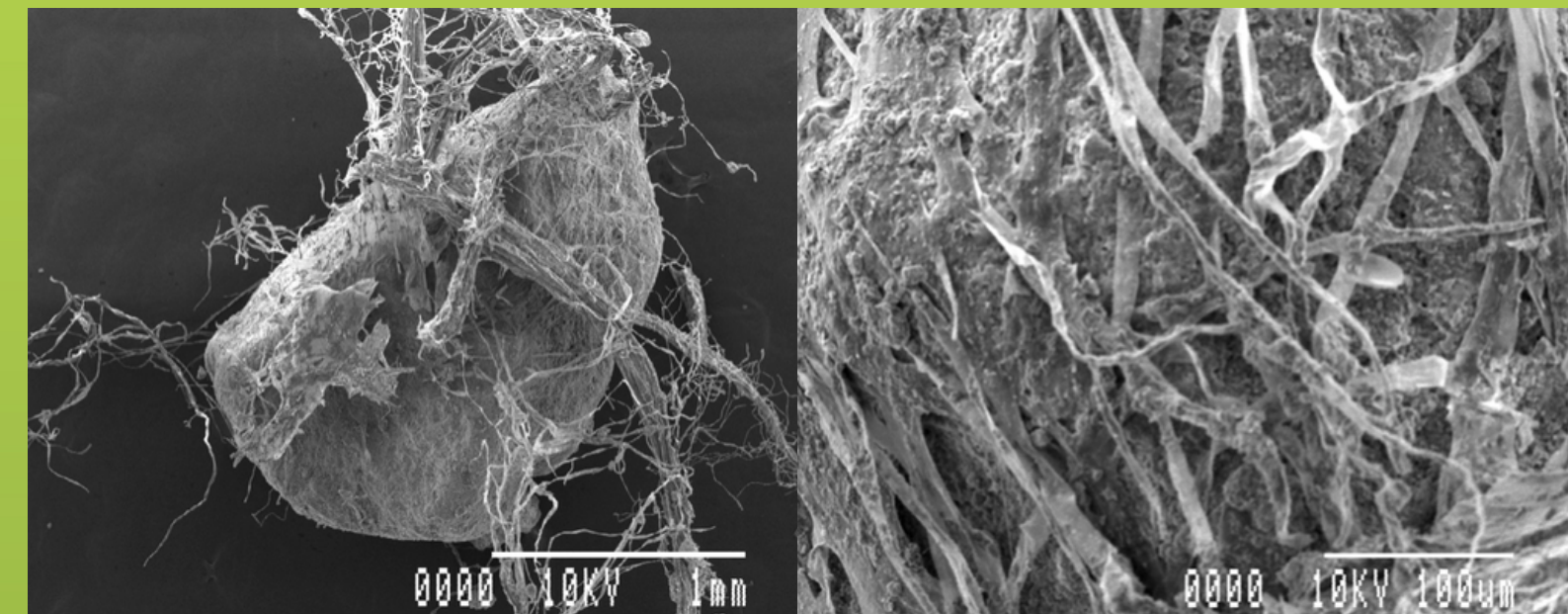
What is NEREA®?

- a revolutionary substrate and plant feeding system
- complete nutrients, bonded to zeolite
- conserves water (up to 30%), & reduces fertilizer waste, runoff (up to 90%)
- grows bigger, better plants – faster and more economically (up to 30-50% more crops/year)

All-natural patent-pending technology based on zeolites – Nature's Nanotech™ – exclusive to IZ

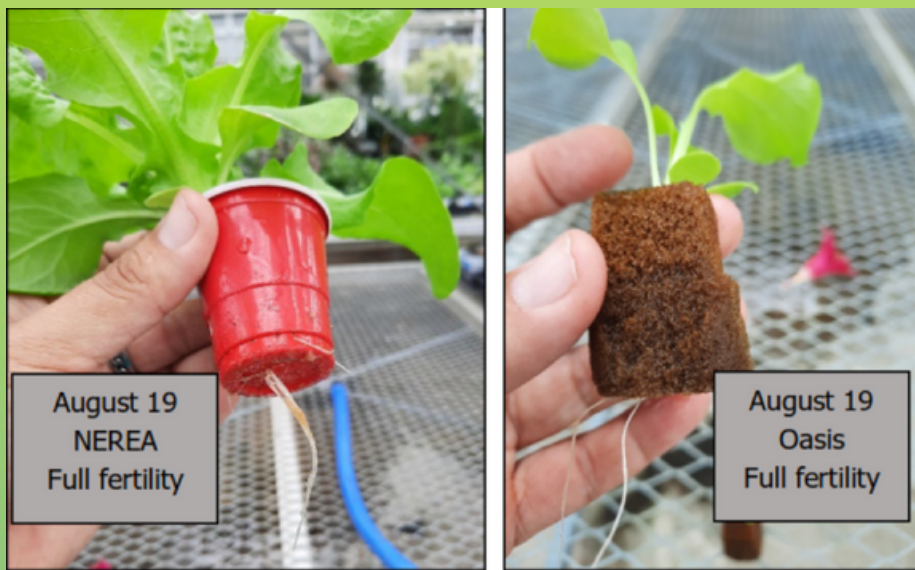
“NEREA® can simplify and accelerate crop production for food and ornamental plant producers, and would also be great for long term crops such as nursery and perennial stock. We effectively reduced total crop time by at least 1-2 weeks.” – Derek Schulze – AETIC, Niagara College

“NEREA® promoted germination rate, time & flowering, shortened the crop cycle and increased yield” (after a trial of 4 commercial crops). – Qinglu Ying, Ph.D., Vineland Research & Innovation Centre



NEREA® - Validation Studies

Studies conducted at **Niagara College (AITEC)** and **Vineland Research & Innovation Centre**



Lettuce

- Lettuce sown directly in NEREA® mix in pots
- grows bigger/faster (~150%+), and
 - doesn't need tray-to-pot transplant labor (!)



Basil

Gerbera Potting Trial



Chlorophyll content index	39.73 c	54.63 a	47.68 b
	25% zeolite	25% NEREA	Pro-mix

Increased profit with NEREA® - *Basil*

Normal: 30 days - 12 crops per year



= \$445-\$471

With NEREA®: ~22-23 days: 16 crops per year



= \$593-\$628

Revenue Δ+: **\$148-\$157**

= 33% Increase

* Cost of NEREA® \$19.07 ... for the whole year.

* If under lighting - lighting costs per unit drop by 33%.

* Does not account for reduced fertilizer, perlite cost potential

Increased profit with NEREA® - *Lettuce*

Normal: 30 days - 12 crops per year



= \$391-\$415

With NEREA®: ~20 days: 18 crops per year



= \$586-\$622

Revenue Δ+: **\$195-\$207**

~50% Increase

* Cost of NEREA® \$19.07 ... for the whole year.

* If under lighting - lighting costs per unit drop by 33%.

* Does not account for reduced fertilizer, perlite cost potential

Product Solutions Consulting

NatZEng® Consulting Services

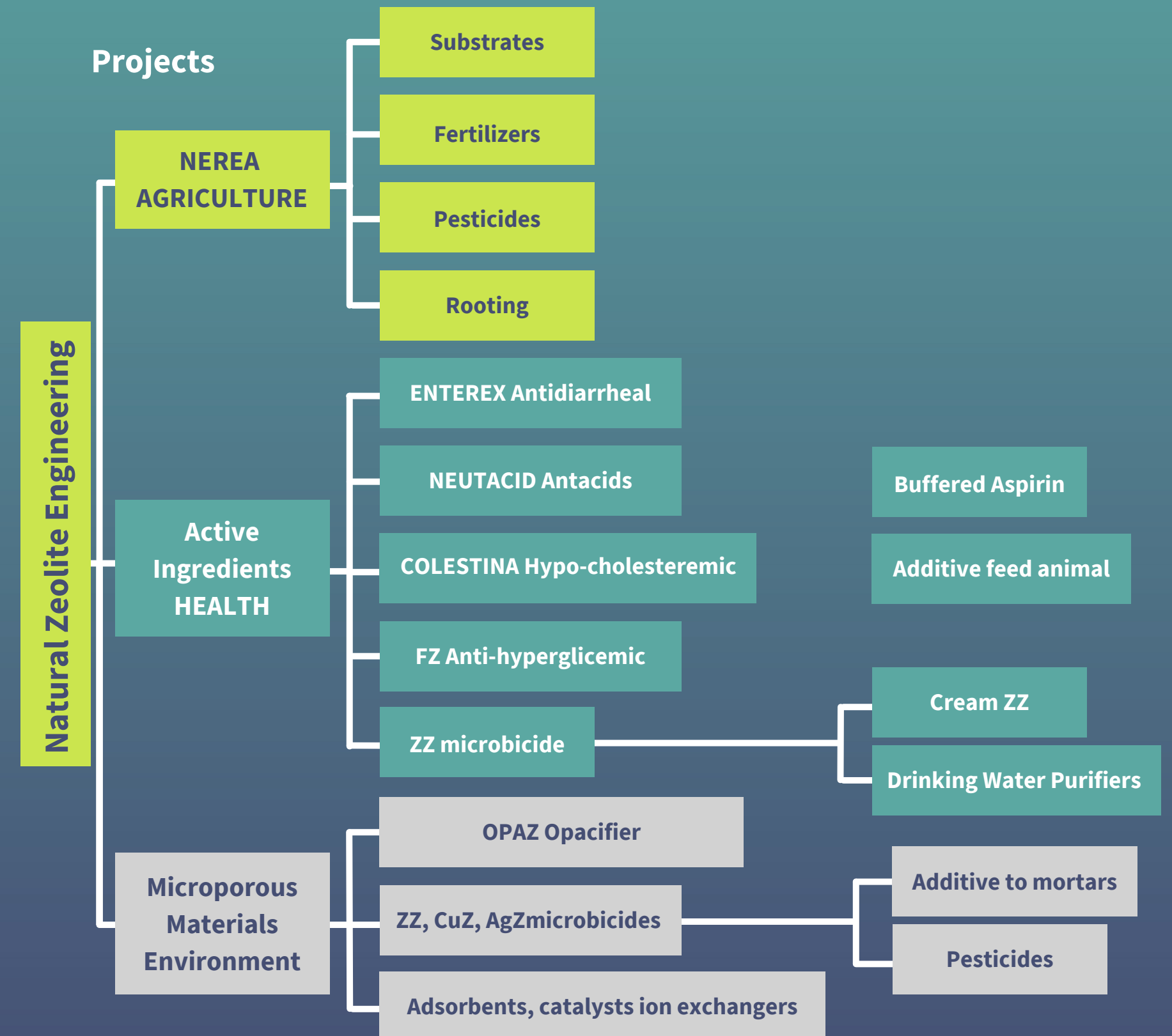
- An Engineering Group that provides unique Natural Zeolite Engineering Consulting services to Natural Zeolite suppliers and end users.
- Development of Natural Zeolite Engineering Methodology since 1980

Services

- Experience on natural zeolite resource management
- Scientific support and information
- Design and development of high value added zeolite products and technologies of production and use
- Scientific and technical training
- Connecting companies to access markets

Team

- 1 Dr. Cs / 3 PhD's / 2 MSc
- 2 Physicists
- 3 Chemists
- 6 Engineers – 2 Agronomist / 2 Metallurgic / 2 Chemical



SUPPLY

Bromley Creek

- Fully operational zeolite quarry in Princeton, British Columbia
- 1,492.2 hectare property claim, 30-year mine lease
- NI43-101 measured, indicated, qualified zeolite resource
- 3rd party contract miner and processor

Mine Production

Year	Tonnes	+/-%	NA Share %
2021	813.5	+91.7%	0.90%
2020	424.2	-42.6%	0.49%
2019	739.6	-42.6%	0.81%
2018	1,288.4	+150.3%	1.47%

Sun Group

- Future zeolite quarry site in the Similkameen Mining District, BC
- 949-hectare property claim
- Resource reported at 46M Tonnes of zeolite, 100-year life span
- NI43-101 measured, indicated, qualified zeolite resource

Development work completed

- Exploration Programme Reserve Estimate and Mine Feasibility Review
- Exploration Program & Resource Evaluation
- Field Exploration Technical Report with twin drill program

Supply Relationships

- Bear River Zeolite - Idaho, USA
- KMI Zeolite – Nevada, USA
- St. Cloud Mining – New Mexico, USA
- San Andreas Mine - Cuba

R&D/IP/CERTIFICATIONS

R&D

- Independent partner research model
- Focused, continuous product research and validation testing

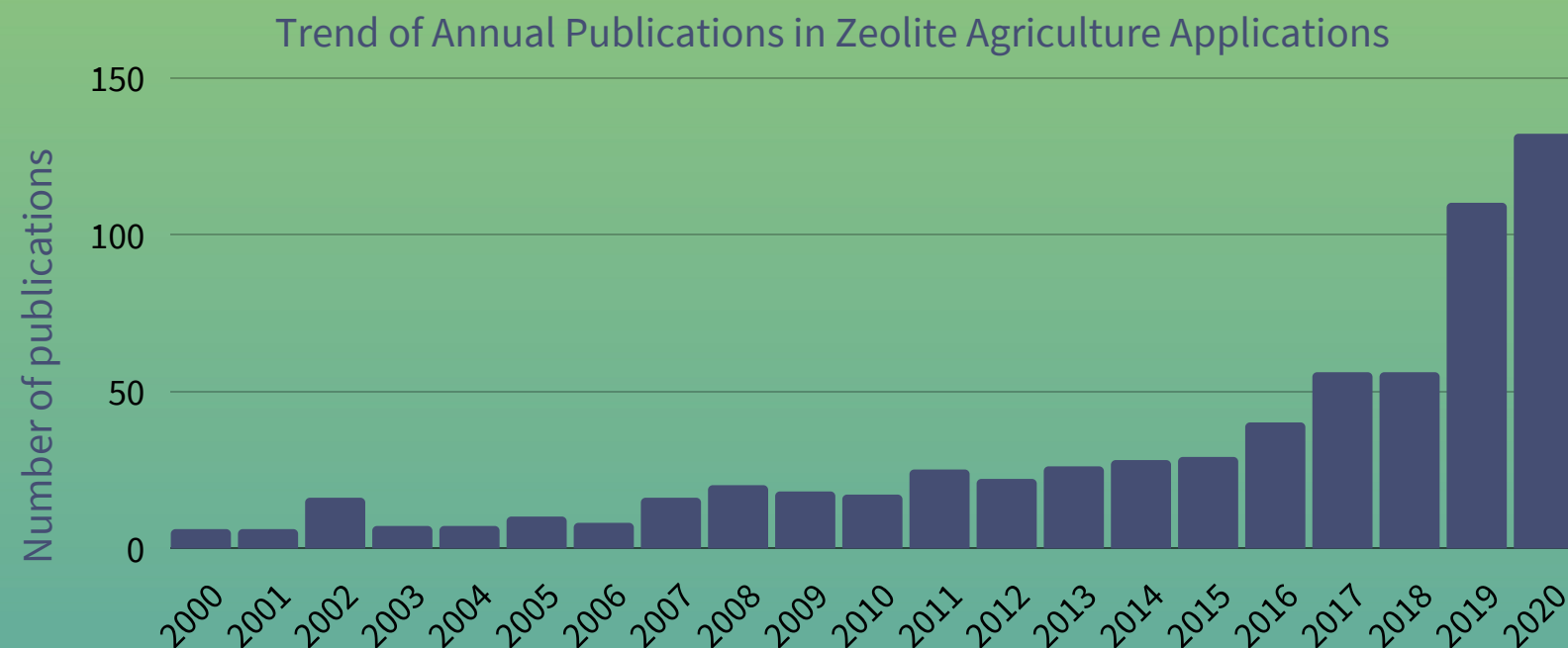
Agriculture Research Partners

- Niagara College Research & Innovation
- Vineland Research & Innovation
- University of Havana

Customer Testing Partners

- Animal feed - Wallenstien
- Water Treatment - Barrick Gold

Industry Research



Intellectual Property

- North American exclusivity to utilize patented disruptive, transformational technology that creates value added zeolite products through the infusion of enhanced application materials into the natural zeolite mineral

Mine Certifications

- Technical Report NI43-101 – Bromley Creek Property (August 17, 2018)
- Technical Report NI43-101 – Sun Group Property (June 30, 2018)

Product Certifications/Registrations

- CFIA Registrations
- OMRI Canada Certifications
- Fertilizers Act Registrations
- Safety Data Sheets

LEADERSHIP

Executive Team

Ray Paquette

- CEO

Ken Malone

- Chief Revenue Officer

Hatem Kawar

- CFO

Mark Pearlman

- President and COO

Catherine Beckett

- Corporate Secretary

Andrew Corradini

- Chief Commercial Officer

Advisory Team

Rohn Crabtree

Dr. Gerardo Rodriguez-Fuentes

Cliff Hacking

Board

Ray Paquette

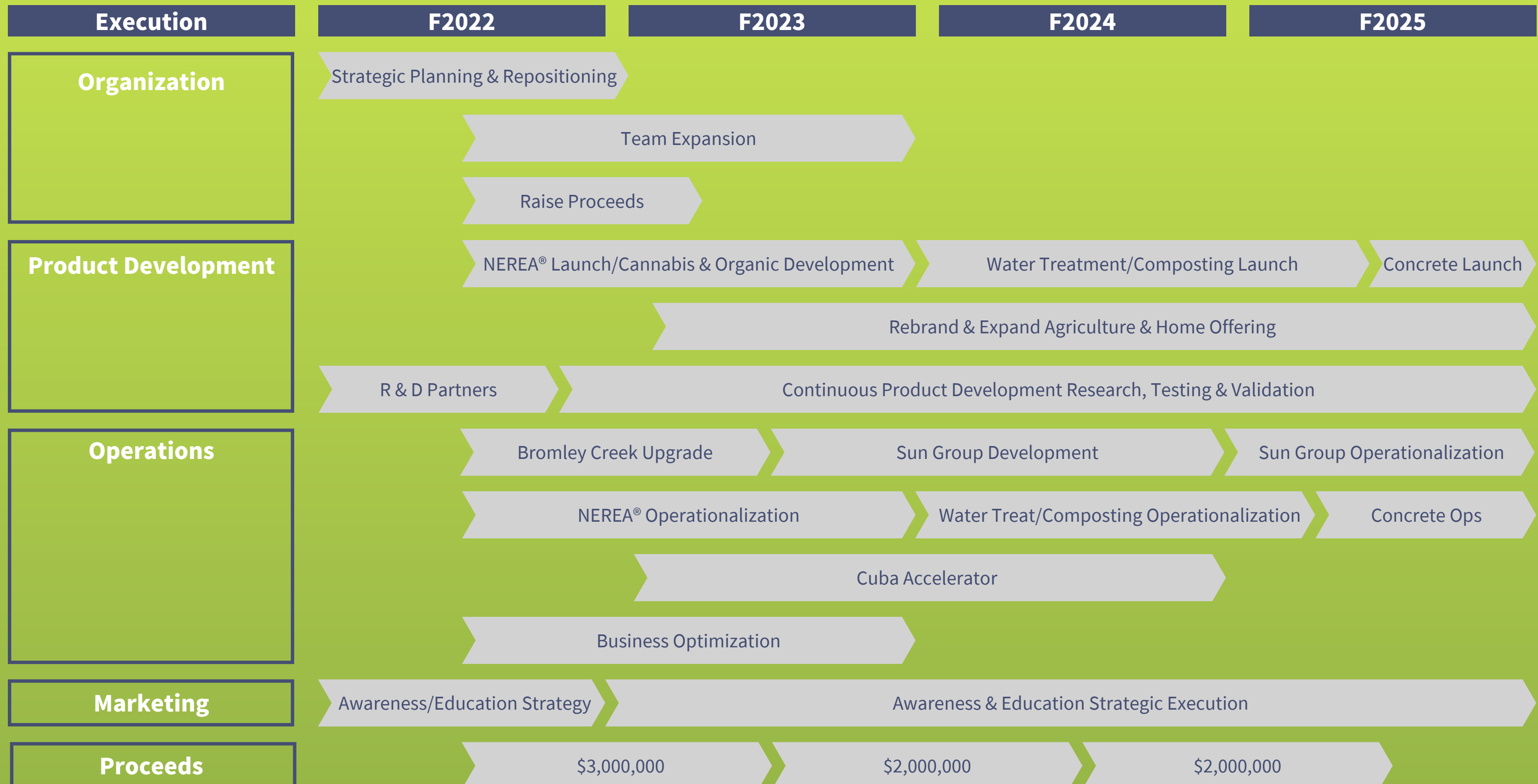
Ron Schneider

Stephen Coates

Mark Pearlman

Dave Kepkay

ROADMAP HIGHLIGHTS



Equity Structure

Public Company

- TSX-V: IZ
- FRA: ZEON

Share Capitalization information, as of February 1, 2022

- Issued and outstanding share capital = 40,790,712
- Stock options outstanding 3,706,250
- Warrants = 1,143,750
- Fully dilute share capital = 45,640,712

Ownership Profile

- Mgmt & insiders = 29%
- Significant holders = 20%
- Shareholders = 1,100



Contact

Mark Pearlman
President & COO

(416) 704-5094

mpearlman@internationalzeolite.com

Investor Relations: Bill Mitoulas
Principal, Venture North Capital Inc.

(416) 479-9547

bill@internationalzeolite.com

